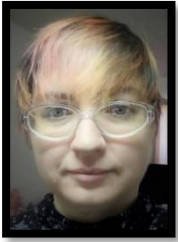


HOME ARTS

Dept. HM

Entry deadline: July 23

Note: Entry times have changed. See Schedule of Events



Superintendent: MargiGrace Hansen

Phone: 406-217-7637

Email: KittyMallard@gmail.com

Facebook: <https://www.facebook.com/MSFHomeArts>

HOME ARTS MISSION STATEMENT: To provide an opportunity for exhibitors to generate pleasing and creative exhibits using textiles; to extend educational opportunities to patrons of all ages and interests; to promote family activities.

JUDGES: TBA

2023 SCHEDULE OF EVENTS

(All activities listed will be in the Exhibition Hall.)

Wednesday, July 5 – Friday, July 21	9am - 4pm	Entry Office open to pre-register entry forms only. Need not pay at that time. Call 727-8900 and ask for Entry Office for more information. No early entries will be accepted without permission of the Superintendent
Saturday, July 22	10am-4pm	Entries and pre-registry contest forms accepted in Home Arts. Pre-entries for contests Also accepted
Sunday, July 23	Noon to 4pm	Entries and pre-registry contest forms accepted in Home Arts. Pre-entries for contests also accepted
Monday, July 24	9am	Home Arts Division judging begins. Public welcome to observe only. Please refrain from contact with judges.
Friday, July 28	Noon	Fair Opens to the Public People’s Choice voting begins. Eye Spy begins. Drawings daily. See Home Arts for details.
Saturday, July 29 thru Friday, Aug. 4	4pm & 6pm	Home Arts Demos. Demo information will be available in the Home Arts Department and our Facebook page (see address above).
Saturday, July 29	2pm-4pm	“Fastest Needle in the West” Contest, Sponsored by <i>Yarn and Honey</i>. Entry form available in premium book, online, or at Yarn and Honey (during regular business hours).
	2pm-8pm	Free Kids Make-n-Take Project for ages 4 and up. While supplies last.
Sunday, July 30	2pm-4pm	“Fastest Hook in the West” Contest, Sponsored by <i>Yarn and Honey</i>. Entry form available in premium book, online, or at Yarn and Honey (during regular business hours).
Monday, July 31	Noon-6pm 7pm	May Carol Doll Club Dress a Doll Contest entries accepted. Judging. Winner announced after judging.
Tuesday, Aug. 1	Noon-6pm 7pm	Fat Quarter Challenge, Sponsored by <i>The Quilt-A-Way</i> entries accepted. Entry form available in premium book, online, or at The Quilt-A-Way (during regular business hours). Judging. Winner announced after judging. People’s Choice voting closes at 10pm.
Wednesday, Aug. 2	6pm-8pm	Awards Night and meet-n-greet. Awards will be presented. Stay for refreshments and meet other exhibitors. Last day for Eye Spy drawings. (Eye spy will still available but no drawings will be held.)
Thursday, Aug. 3	Noon-6pm 7pm	Dress a Dog Contest entries accepted. Judging begins. Winners announced after judging.
Sunday, Aug. 3	10am-2pm	Entries released from Home Arts. Please make every effort to pick up your entries during this time frame. Unclaimed entries will be held at the Entry Office Monday through Thursday of the week following fair.

Every effort will be made to follow the above schedule but due to unforeseen circumstances the schedule is subject to change.

Follow our Facebook page to learn of any changes that may be available. <https://www.facebook.com/MSFHomeArts>

PREMIUMS
ATTENTION EXHIBITORS

The Entry office will process judging results as quickly as possible after completion of judging. Please allow 3 to 5 days. Notice will be posted in departments when premium checks are processed and ready in the Entry Office. The **Entry Office** will be open from **July 28th through August 5th (8am to 6pm) and August 6th through August 10th (9am to 4pm)**. Every effort should be made to collect your Premium Checks between these times. Premium Checks of \$399.99 or less can be cashed during these times in the Entry Office. All remaining Premium Checks will be mailed to you in the name and at the address provided by you on the entry form. The Montana State Fair will only mail premium checks.

NOTE: A W9 must be filled out each year if either of the following apply to you:

- **You have had changes to your name or address**
- **You are a first-time exhibitor at the Montana State Fair**

Rules & Regulations

1. All participants at Montana State Fair events are responsible for reading the Montana State Fair GENERAL INFORMATION Section and complying with policies listed therein. This section is located at goexpopark.com under the Montana State Fair tab.
2. AGREEMENT TO ALL RULES AND REGULATIONS HEREIN STATED IS UNDERSTOOD WHEN THE EXHIBITOR SUMITS GENERAL ENTRY FORM.
3. All entrants must complete a W9 form at time of entry to receive any premiums.
4. **All exhibitors may purchase admittance tickets.** Adult and Youth exhibitors may purchase an Exhibitor's Packet for \$20 good for 10 admissions for Fair week. With purchase of first Exhibitor's Packet, additional free passes are issued for every \$50 of entry fees. Exhibitors may purchase individual tickets for \$4 each.
5. No pre-entries will be accepted. Pre-entry FORMS are encouraged. It will take less time to process the entries on Entry Day.
6. ANY ARTICLES PREVIOUSLY EXHIBITED AT STATE FAIR WILL NOT BE ACCEPTED.
7. ITEMS IN THE HOME ARTS DEPARTMENT MUST BE COMPLETELY OR PREDOMINANTLY CONSTRUCTED OF TEXTILES. (SEE #5 EXHIBITOR'S TIPS.) NO EXCEPTIONS WILL BE PERMITTED.
8. No live plants may be entered with articles nor will articles made of food be accepted.
9. ARTICLES ENTERED MAY NOT BE PICKED UP BEFOR THE STATED RELEASE DATE AND TIME. See schedule.
10. At the superintendent's discretion, items entered may be transferred to a more appropriate class prior to judging.
11. When there is competition, articles may be awarded first, second, and third or no premium, according to the merits of the article. No premium will be awarded when the article is unworthy, even if there is no competition.
12. No Best of Show prizes will be awarded if there are no items worthy of a special award.
13. Articles must be the exhibitor's work. No premiums will be allowed on articles purchased, received as gifts, or borrowed.
14. Honorable mention ribbons will be awarded for meritorious work deserving of recognition, but no cash will be given for any award other than those listed in the premium book.
15. EXHIBITORS MAY ENTER NO MORE THAN TWO ITEMS PER CLASS.
16. *Exhibitors are limited to entering items in ONE DIVISION CLASS ONLY (i.e. Open Class, Golden Age, Special Exhibitor, Youth, or Junior.)
17. Contest Entries are separate from Division Entries and will NOT be judged in both categories.
18. Knit and crocheted articles must be blocked.
19. Cross stitch pictures must be evenly stretched with a neatly finished back and ready to hang. These need not be done professionally.
20. Wall hangings must be ready to hang. Please provide rod or other hardware if needed.
21. Pillow stuffing or form must fill out the corners of the fabric.
22. Quilts entered in the Home Arts Department need not be quilted by the exhibitor. Only the work of the exhibitor will be judged. **Please state on entry form if the quilting is done by another person.**
23. Articles used prior to fair time must be clean and exhibit ready. State Fair reserves the right to disqualify from entry articles deemed unsuitable for exhibition.
24. *Judges may NOT enter work in category they are judging.

SPECIAL AWARDS

CASCADE COUNTY HOMEMAKERS CLUB AWARDS

Regulations:

1. Club name MUST be listed on entry form.
2. Homemaker must be a paid member of a registered Cascade County Homemakers Club to qualify for awards.
3. Largest Average Number of Exhibits if figured by total number of club exhibits divided by total number of club members.
4. Quality Points are total of ribbon award points divided by the total number of club members:
Sweepstakes: 4 points Blue: 3 points Red: 2 points White: 1 point
 - Largest Average Number of Exhibits
 - 1st-\$50 gift card sponsored by Cascade County Homemakers
 - 2nd-\$10 gift card sponsored by Cascade County Homemakers
 - Highest Quality Points
 - 1st-\$50 gift card sponsored by Cascade County Homemakers
 - 2nd-\$10 gift card sponsored by Cascade County Homemakers

STATE FAIR AWARDS: Sponsored by Montana State Fair.

Each Winner will receive premium money and special rosette:

BEST OF SHOW HOME ARTS-\$25
BEST OF SHOW CROCHETED ARTICLE-\$15
BEST OF SHOW KNITTED ARTICLE-\$15
BEST OF SHOW SEWN ARTICLE-\$15
BEST OF HOUSEHOLD FURNISHINGS-\$15
BEST OF SHOW CROSS STITCH
BEST OF SHOW NEEDLEWORK-\$15
BEST OF SHOW DOLLS & TOYS-\$15
BEST OF SHOW VARIETY CRAFT-\$15
BEST OF SHOW SPECIAL EXHIBITOR-\$15
BEST OF SHOW YOUTH & JUNIOR-\$15
BEST MONTANA THEME-\$10
SUPERINTENDENT'S CHOICE-\$10
PEOPLE'S CHOICE-\$10

Each Winner will receive premium money:

GOLDEN AGE LARGEST PREMIUM WINNER-\$10
YOUTH & JUNIOR LARGEST PREMIUM WINNER-\$10

SPONSORED AWARDS

Yarn and Honey

- Fastest Needle in the West
- Fastest Hook in the West

May Carol Doll Club

- May Carol Doll Club Dress a Doll Contest

The Quilt-A-Way

- Fat Quarter Challenge

MargiGrace Hansen

- Dress a Dog Contest

EXHIBITOR'S TIPS!

These tips will help you get your entries exhibit ready.

1. Look through the judging criteria on the Scorecards page for an idea of what is considered during judging.
2. If garment appears to be out of proportion, please include a picture of the garment being worn. This will aid the judges and insure fairness of their determination.
3. Check all edges of article for threads or yarn sticking out. Cut or tuck in where appropriate.
4. Due to space constraints, accessories for items to be exhibited will be accepted by superintendent permission only.
5. Textile: a flexible material made by creating an interlocking network of yarns or threads, which are produced by spinning raw fibers into long and twisted lengths. Textiles are then formed by weaving, knitting, crocheting, knotting, tatting, felting, bonding, or braiding these yarns together.
6. Needle felting: a process that uses barbed needles to interlock wool fibers to form a more condensed material. Felting: the process using hot water, soap, and some form of agitation to cause the fibers to open up and then bind together. Felt: a kind of cloth made by rolling and pressing wool or another suitable textile accompanied by the application of moisture or heat, which causes the constituent fibers to mat together to create a smooth surface.
7. Please keep Special Awards in mind & enter accordingly.

SCORECARDS

(Calculated for a possible total of 100%.)

SEWING

Individuality of design	20%
Color/fabric suitable for design	20%
Finishing technique	10%
Difficulty	10%
Workmanship	40%

KNITTING

Individuality of design	20%
Color/Texture/Harmony	20%
Technique appropriate for design	10%
Difficulty	10%
Workmanship	40%

HOUSEHOLD FURNISHINGS

Workmanship	35%
Difficulty	25%
Appropriateness of materials used	15%
Overall appearance	25%

NEEDLEWORK (CROSS STITCH)

Stitching technique	35%
Individuality of design	5%
Color harmony	5%
Appeal of finishing (framing/matting)	15%
Technique appropriate for design	15%
Difficulty	25%

NEEDLEWORK (HARDANGER, TATTING, BOBBIN LACE, HAND EMBROIDERY, etc.)

Stitching technique	35%
Individuality of design	5%
Color harmony	15%
Appeal of finishing	15%
Technique appropriate for design	20%
Difficulty	10%

DOLLS & TOYS

Individuality of design	20%
Workmanship	20%
Difficulty	40%
Appropriateness of materials used	10%
Overall appearance	10%

VARIETY CRAFTS

Workmanship	40%
Difficulty	30%
Appropriateness of materials used	15%
Overall appearance	15%

- DIVISION 1: CROCHETED WEARABLES & ACCESSORIES**
- DIVISION 2: KNITTED WEARABLES & ACCESSORIES**
- DIVISION 3: MACHINE SEWN WEARABLES & ACCESSORIES**
- DIVISION 4: CROCHETED HOUSEHOLD FURNISHINGS**
- DIVISION 5: KNITTED HOUSEHOLD FURNISHINGS**
- DIVISION 6: MACHINE SEWN HOUSEHOLD FURNISHINGS**
- DIVISION 7: NEEDLEWORK**
- DIVISION 8: DOLLS and TOYS**
- DIVISION 9: VARIETY CRAFTS**
- DIVISION 10: SPECIAL EXHIBITOR**
- DIVISION 11: YOUTH (13 & under) and JUNIOR (13-18)**

DIVISION 1: CROCHETED WEARABLES & ACCESSORIES

ADULT WEAR CROCHETED

HM-1-_____ (class #)

Entry Fee: \$1.25

Premiums: 1st-\$6, 2nd-\$4, 3rd-\$2

Open class	Golden class		Open class	Golden class	
100	200	Hat	105	205	Vest or T-Shirt
101	201	Purse or Bag	106	206	Any of the above felted
102	202	Jewelry	107	207	Any other Crocheted article not listed
103	203	Scarf			
104	204	Shawl or Shrug			

HM-1-_____ (class #)

Entry Fee: \$1.25

Premiums: 1st-\$8, 2nd-\$6, 3rd-\$4

Open class	Golden class		Open class	Golden class	
110	210	Mittens or Gloves	113	213	Slippers
111	211	Poncho	114	214	Any of the above felted
112	212	Socks			

HM-1-_____ (class #)

Entry Fee: \$1.25

Premiums: 1st-\$10, 2nd-\$8, 3rd-\$6

Open class	Golden class		Open class	Golden class	
116	216	Sweater, Cardigan	118	218	Any of the above felted
117	217	Sweater, Pullover			

CHILD WEAR CROCHETED

HM-1-_____ (class#)

Entry Fee: \$1.25

Premiums: 1st-\$6, 2nd-\$4, 3rd-\$2

Open class	Golden class		Open class	Golden class	
120	220	Hat or Scarf	122	222	Any other Child Wear not listed
121	221	Vest or T-Shirt			

HM-1-_____ (class#)

Entry Fee: \$1.25

Premiums: 1st-\$8, 2nd-\$6, 3rd-\$4

Open class	Golden class		Open class	Golden class	
125	225	Dress	128	228	Slippers
126	226	Mittens or Gloves	129	229	Sweater
127	227	Socks			

INFANT WEAR CROCHETED

HM-1-_____ (class#)

Entry Fee: \$1.25

Premiums: 1st-\$5, 2nd-\$3, 3rd-\$1.25

Open class	Golden class		Open class	Golden class	
132	232	Bib	135	235	Any other Infant article not listed
133	233	Bonnet or Hat			
134	234	Booties			

HM-1-_____ (class#)

Entry Fee: \$1.25

Premiums: 1st-\$6-2nd-\$4, 3rd-\$2

Open class	Golden class	
137	237	Bunting
138	238	Ensemble

PET WEAR CROCHED**HM-1-_____ (class#)**

Entry Fee: \$1.25

Premiums: 1st-\$5, 2nd-\$3, 3rd-\$1.25

Open class	Golden class	
130	230	Any Pet wearable article

DIVISION 2: KNITTED WEARABLES & ACCESSORIES**ADULT WEAR KNITTED****HM-2-_____ (class#)**

Entry Fee: \$1.25

Premiums: 1st-\$6, 2nd-\$4, 3rd-\$2

Open class	Golden class		Open class	Golden class	
100	200	Hat	105	205	Vest or T-Shirt
101	201	Jewelry	106	206	Any of the above felted
102	202	Purse or Bag	107	207	Any other crocheted article not listed
103	203	Scarf			
104	204	Shawl or Shrug			

HM-2-_____ (class#)

Entry Fee: \$1.25

Premiums: 1st-\$8, 2nd-\$6, 3rd-\$4

Open class	Golden class		Open class	Golden class	
110	210	Mittens or Gloves	113	213	Slippers
111	211	Poncho	114	214	Any of the above felted
112	212	Socks			

HM-2-_____ (class#)

Entry Fee: \$1.25

Premiums: 1st-\$10, 2nd-\$8, 3rd-\$6

Open class	Golden class		Open class	Golden class	
116	216	Sweater, Cardigan	118	218	Any of the above felted
117	217	Sweater, Pullover			

CHILD WEAR KNITTED**HM-2-_____ (class#)**

Entry Fee: \$1.25

Premiums: 1st-\$6, 2nd-\$4, 3rd-\$2

Open class	Golden class		Open class	Golden class	
120	220	Hat or Scarf	122	222	Any other Child Wear article not listed
121	221	Vest or T-Shirt			

HM-2-_____ (class#)

Entry Fee: \$1.25

Premiums: 1st-\$8, 2nd-\$6, 3rd-\$4

Open class	Golden class		Open class	Golden class	
125	225	Dress	128	228	Slippers
126	226	Mittens or Gloves	129	229	Sweater
127	227	Socks			

INFANT WEAR KNITTED**HM-2-_____ (class#)**

Entry Fee: \$1.25

Premiums: 1st-\$5, 2nd-\$3, 3rd-\$1.25

Open class	Golden class		Open class	Golden class	
132	232	Bib	135	235	Any other Infant article not listed
133	233	Bonnet or Hat			
134	234	Booties			

HM-2-_____ (class#)

Entry Fee: \$1.25

*Premiums: 1st-\$6-2nd-\$4, 3rd-\$2***Open class Golden class**

138	238	Bunting
139	239	Ensemble

PET WEAR KNITTED**HM-2-_____ (class#)**

Entry Fee: \$1.25

*Premiums: 1st-\$5, 2nd-\$3, 3rd-\$1.25***Open class Golden class**

132	232	Any Pet wearable article
-----	-----	--------------------------

DIVISION 3: MACHINE SEWN WEARABLES & ACCESSORIES**ADULT WEAR MACHINE SEWN****HM-3-_____ (class#)**

Entry Fee: \$1.25

*Premiums: 1st-\$6, 2nd-\$4, 3rd-\$2***Open class Golden class**

100	200	Apron
101	201	Cap or Hat
102	202	Purse or Bag

Open class

103
104
105

Golden class

203
204
205

Scarf
Shawl or Cape
Vest

HM-3-_____ (class#)

Entry Fee: \$1.25

*Premiums: 1st-\$8, 2nd-\$6, 3rd-\$4***Open class Golden class**

108	208	Blouse or Shirt
109	209	Costume
110	210	Dress, everyday
111	211	Jeans
112	212	Mittens or Gloves

Open class

113
114
115
116

Golden class

213
214
215
216

Pants
Shorts or Skort
Skirt
Any other Adult wear not listed

HM-3-_____ (class#)

Entry Fee: \$1.25

*Premiums: 1st-\$10, 2nd-\$8, 3rd-\$6***Open class Golden class**

118	218	Coat or Jacket
119	219	Dress, Formal or Bridal
120	220	Ensemble

CHILD WEAR MACHINE SEWN**HM-3-_____ (class#)**

Entry Fee: \$1.25

*Premiums: 1st-\$6, 2nd-\$4, 3rd-\$2***Open class Golden class**

123	223	Blouse or Shirt
124	224	Cap or Hat
125	225	Dress, everyday
126	226	Pants
127	227	Shorts

Open class

128
128
130

Golden class

228
229
230

Skirt
Vest
Any other Child wear small article not listed

HM-3-_____ (class#)

Entry Fee: \$1.25

*Premiums: 1st-\$8, 2nd-\$6, 3rd-\$4***Open class Golden class**

133	233	Dress, formal
134	234	Costume
135	235	Mittens or Gloves

Open class

136

Golden class

235

Any other Child wear large article not listed

INFANT WEAR MACHINE SEWN**HM-3-_____ (class#)**

Entry Fee: \$1.25

Premiums: 1st-\$5, 2nd-\$3, 3rd-\$1.25

Open class	Golden class	
138	238	Bib
139	239	Bonnet, Cap, or Hat
140	240	Booties

HM-3-____ (class#)

Premiums: 1st-\$6, 2nd-\$4, 3rd-\$2

Open class	Golden class		Open class	Golden class	
143	243	Bunting	146	246	Ensemble
144	244	Coat or Jacket	147	247	Any other Infant wear not listed
145	245	Dress			

PET WEAR MACHINE SEWN

HM-3.8-____ (class#)

Entry Fee: \$1.25

Premiums: 1st-\$5, 2nd-\$3, 3rd-\$1.25

149	249	Any Pet wearable article
-----	-----	--------------------------

DIVISION 4: CROCHETED HOUSEHOLD FURNISHINGS

HM-4-____ (class#)

Entry Fee: \$1.25

Premiums: 1st-\$5, 2nd-\$3, 3rd-\$1.25

Open class	Golden class	
100	200	Bookmark
101	201	Centerpiece, dimensional not flat
102	202	Coasters, set of 2-4
103	203	Dishcloth
104	204	Handkerchief trim
105	205	Hot pad
106	206	Kitchen towel top
107	207	Pet article, household use such as bed, blanket, or placemat
108	208	Pillowcase trim
109	209	Potholders, set of 2
110	210	Table topper
111	211	Any other small Crocheted Household article not listed

HM-4-____ (class#)

Entry Fee: \$1.25

Premiums: 1st-\$6, 2nd-\$4, 3rd-\$2

Open class	Golden class	
115	215	Baby Afghan
116	216	Lap robe, not to exceed 3'x4'
114	217	Pillow
118	218	Placemats, set of 2-4
119	219	Rug
120	220	Table runner
121	221	Any other medium Crocheted Household article not listed

HM-4-____ (class#)

Entry Fee: \$1.25

Premiums: 1st-\$8, 2nd-\$6, 3rd-\$4

Open class	Golden class	
124	224	Doily, Christmas
125	225	Doily, Thread 5"to12"
125	226	Doily, Thread 13"to20"
127	227	Doily, Thread over 20"
128	228	Doily, Yarn 5"to12"
129	229	Doily, Yarn 13"to20"
130	230	Doily, Yarn over 20"
131	231	Wall hanging, framed or unframed but finished
132	232	Any other large Crocheted Household article not listed

HM-4-_____ (class#)

Entry Fee: \$1.25

Premiums: 1st-\$10, 2nd-\$8, 3rd-\$6

Open class	Golden class		Open class	Golden class	
135	235	All crochet lace tablecloth	138	238	Afghan, blocked and jointed
136	236	Afghan sampler using at least 6 different stitches	139	239	Afghan not listed
137	237	Afghan larger than 3'x4'	140	240	Bedsread

DIVISION 5: KNITTED HOUSEHOLD FURNISHINGS**HM-5-_____ (class#)**

Entry Fee: \$1.25

Premiums: 1st-\$5, 2nd-\$3, 3rd-\$1.25

Open class	Golden class	
100	200	Bookmark
101	201	Centerpiece, dimensional not flat
102	202	Coasters, set of 2-4
103	203	Dishcloth
104	204	Handkerchief trim
105	205	Hot pad
106	206	Kitchen towel top
107	207	Pet article, household use such as bed, blanket, or placemat
108	208	Pillowcase trim
109	209	Potholders, set of 2
110	210	Table topper
111	211	Any other small Knitted Household article not listed

HM-5-_____ (class#)

Entry Fee: \$1.25

Premiums: 1st-\$6, 2nd-\$4, 3rd-\$2

Open class	Golden class		Open class	Golden class	
115	215	Baby Afghan	119	219	Rug
116	216	Lap robe, not to exceed 3'x4'	120	220	Table runner
117	217	Placemats, set of 2-4	121	221	Any other medium Knitted Household article not listed
118	218	Pillow			

HM-5-_____ (class#)

Entry Fee: \$1.25

Premiums: 1st-\$8, 2nd-\$6, 3rd-\$4

Open class	Golden class		Open class	Golden class	
124	224	Doily, Christmas	130	230	Doily, Yarn over 20"
125	225	Doily, Thread 5"to12"	131	231	Wall hanging, framed or unframed
126	226	Doily, Thread 13"to20"			
127	227	Doily, Thread over 20"	132	232	Any other large Knitted Household article not listed
128	228	Doily, Yarn 5"to12"			
129	229	Doily, Yarn 13"to20"			

HM-5-_____ (class#)

Entry Fee: \$1.25

Premiums: 1st-\$10, 2nd-\$8, 3rd-\$6

Open class	Golden class	
135	235	Afghan sampler using at least 6 different stitches
136	236	Afghan larger than 3'x4'
137	237	Afghan, blocked and jointed
138	238	Afghan not listed
139	239	Bedsread

DIVISION 6: MACHINE SEWN HOUSEHOLD FURNISHINGS**HM-6-_____ (class#)**

Entry Fee: \$1.2

Premiums: 1st-\$5 2nd-\$3, 3rd-\$1.25

Open class	Golden class	
100	200	Centerpiece, dimensional not flat

101	201	Coasters, set of 2-4
102	202	Hot Pad
103	203	Pet article, household use such as bed, blanket, or placemat
104	204	Pillowcases, set of 2
105	205	Placemats, set of 2-4
106	206	Potholders, set of 2
107	207	Table runner
108	208	Any other small Machine Sewn Household article not listed

HM-6-_____ (class#)

Entry Fee: \$1.25

Premiums: 1st-\$6, 2nd-\$4, 3rd-\$2

Open class	Golden class	
111	211	Blanket
112	212	Pillow, stuffing or pillow form must fill corners
113	213	Rug
114	214	Tablecloth
115	215	Wall hanging, unframed
116	216	Any other medium Machine Sewn Household article not listed

HM-6-_____ (class#)

Entry Fee: \$1.25

Premiums: 1st-\$8, 2nd-\$6, 3rd-\$4

Open class	Golden class	
119	219	Bedspread or Comforter
120	220	Quilt, any size
121	221	Quilt, restored (list repairs and provide before and after photos)
122	222	Any other large Machine Sewn Household article not listed

DIVISION 7: NEEDLEWORK

COUNTED CROSS STITCH FRAMED (6 to 17 count fabric)

HM-7-_____ (class#)

Entry Fee: \$1.25

Premiums: 1st-\$9, 2nd-\$7, 3rd-\$5

Open class	Golden class	Open class	Golden class		
100	200	Angel or Religious	110	210	Pattern made from a photo (include photo)
101	201	Animals			People
102	202	Animated characters	111	211	Sampler
103	203	Announcement	112	212	Scenery
104	204	Christmas	113	213	Special Occasion
105	205	Fantasy or Fairy	114	214	Verse or Quote
106	206	Floral	115	215	Any other Counted Cross stitch 6-17ct. not listed
107	207	Holiday other than Christmas	116	216	
108	208	Nature			
109	209	Original design (include sketch and pattern)			

COUNTED CROSS STITCH FRAMED (18 count fabric or higher)

HM-7-_____ (class#)

Entry Fee: \$1.25

Premiums: 1st-\$12, 2nd-\$10, 3rd-\$8

Open class	Golden class	
120	220	Angel or Religious
121	221	Animals
122	222	Animated characters
123	223	Announcement
124	224	Christmas
125	225	Fantasy or Fairy
126	226	Floral
127	227	Holiday other than Christmas

128	228	Nature
129	229	Original design (include sketch and pattern)
130	230	Pattern made from a photo (include photo)
131	231	People
132	232	Sampler
133	233	Scenery
134	234	Special Occasion
135	235	Verse or Quote
136	236	Any other Counted Cross stitch 18ct. or higher not listed

CROSS STITCH UNFRAMED (must be finished)

HM-7-_____ (class#)

Entry Fee: \$1.25

Premiums: 1st-\$5, 2nd-\$3, 3rd-\$1.25

Open class	Golden class		Open class	Golden class	
139	239	Bath towel	142	242	Dish towel
140	240	Christmas ornament	143	243	Keychain
141	241	Clothing article	144	244	Potholder

COUNTED CROSS STITCH UNFRAMED (must be finished)

HM-7-_____ (class#)

Entry Fee: \$1.25

Premiums: 1st-\$6, 2nd-\$4, 3rd-\$2

Open class	Golden class		Open class	Golden class	
147	247	Blanket	152	252	Wall hanging, unframed but finished
148	248	Placemats, set of 2-4			
149	249	Pillowcases, set of 2	153	253	Any other Unframed Cross stitch not listed
150	250	Tablecloth			
151	251	Table runner			

HARDANGER

HM-7-_____ (class#)

Entry Fee: \$1.25

Premiums: 1st-\$8, 2nd-\$6, 3rd-\$4

Open class	Golden class		Open class	Golden class	
155	255	Christmas tree ornament	158	258	Specimen
156	256	Doily	159	259	Any other Hardanger article not listed
157	257	Table topper			

HM-7-_____ (class#)

Premiums: 1st-\$10, 2nd-\$8, 3rd-\$6

Open class	Golden class	
161	261	Sampler, 3 or more stitching techniques (list each stitch for judges)
162	262	Table runner
163	263	Wall hanging, framed
164	264	Wall hanging, unframed but finished

TATTING

Specify if you used needle or shuttle

HM-7-_____ (class#)

Entry Fee: \$1.25

Premiums: 1st-\$6, 2nd-\$4, 3rd-\$1.25

Open class	Golden class		Open class	Golden class	
166	266	Handkerchief trim	169	269	Any other Tatting not listed
167	267	Ornament			
168	268	Pillowcase trim			

HM-7-_____ (class#)

Entry Fee: \$1.25

Premiums: 1st-\$8, 2nd-\$6, 3rd-\$4

Open class	Golden class	
171	271	All tatted Doily
172	272	All tatted Table runner

HM-7-_____ (class#)
 Entry Fee: \$1.25
 Premiums: 1st-\$10, 2nd-\$8, 3rd-\$6

Open class	Golden class	
174	274	All tatted Tablecloth

BOBBIN LACE

HM-7-_____ (class#)
 Entry Fee: \$1.25
 Premiums: 1st-\$8, 2nd-\$6, 3rd-\$4

Open class	Golden class		Open class	Golden class	
200	300	Christmas tree ornament	203	303	Specimen
201	301	Doily	204	304	Any other Hardanger article not listed
202	302	Table topper			

HM-7-_____ (class#)
 Entry Fee: \$1.25
 Premiums: 1st-\$10, 2nd-\$8, 3rd-\$6

Open class	Golden class	
205	305	Sampler, 3 or more stitching techniques (list each stitch for judges)
206	306	Table runner
207	307	Wall hanging, framed
208	308	Wall hanging, unframed but finished

HAND EMBROIDERY (excludes cross stitch)

HM-7-_____ (class#)
 Entry Fee: \$1.25
 Premiums: 1st-\$6, 2nd-\$4, 3rd-\$1.25

Open class	Golden class		Open class	Golden class	
176	276	Blanket	183	283	Table topper
177	277	Dish towels, set of 4 or more	184	284	Wall hanging, framed
178	278	Clothing article	185	285	Wall hanging, unframed, but finished
179	279	Pillowcases, set of 2			Holiday article
180	280	Placemats, set of 2-4	186	286	Any other Hand Embroidery article not listed
181	281	Tablecloth	187	287	
182	282	Table runner			

MACHINE EMBROIDERY

HM-7-_____ (class#)
 Entry Fee: \$1.25
 Premiums: 1st-\$6, 2nd-\$4, 3rd-\$2

Open class	Golden class		Open class	Golden class	
190	290	Blanket	195	295	Table topper
191	291	Clothing article	196	296	Holiday article
192	292	Pillow	197	297	Any other Hand Embroidery article not listed
193	293	Pillowcases, set of 2			
194	294	Table runner			

ANY OTHER NEEDLEWORK NOT LISTED

HM-7-_____ (class#)
 Premiums: 1st-\$6, 2nd-\$4, 3rd-\$2

Open class	Golden class	
199	299	Any other Needlework not listed

DIVISION 8: DOLLS & TOYS

DOLLS (all clothing must be made by exhibitor with textiles)

HM-8-_____ (class#)
 Entry Fee: \$1.25
 Premiums: 1st-\$8, 2nd-\$6, 3rd-\$4

Open class	Golden class	
100	200	Angel
101	201	Baby
102	202	Bride
103	203	Military or Patriotic theme
104	204	Ethnic

105	205	Storybook character (identify character)
106	206	Holiday
107	207	Original design (include sketch/pattern)
108	208	Doll dressed from book or magazine, etc. (must include photo)
109	209	Doll, machine sewn clothes
110	210	Doll, crocheted clothes
111	211	Doll, knitted clothes
112	212	Doll, crocheted body
113	213	Doll, knitted body
114	214	Doll, felted body
115	215	Doll with felted clothing
116	216	Any other doll not listed; clothing constructed by exhibitor
117	217	Any other doll body made with textiles not listed, made by exhibitor

TOYS (safety of toy will be considered when judged)

HM-8-_____ (class#)

Entry Fee: \$1.25

Premiums: 1st-\$8, 2nd-\$6, 3rd-\$4

Open class

Golden class

118	218	Teddy Bear with clothing (both constructed by exhibitor)
119	219	Teddy Bear, fabric
120	220	Teddy Bear, crocheted
121	221	Teddy Bear, knitted
122	222	Teddy Bear, jointed
123	223	Teddy Bear, miniature
124	224	Any other Teddy Bear not listed
125	225	Puppet
126	226	Stuffed animal, crocheted
127	227	Stuffed animal, knitted
128	228	Stuffed animal, fabric
129	229	Any other toy not listed constructed with textiles

DIVISION 9: VARIETY CRAFTS

EVERYDAY CRAFTS NOT HOLIDAY

HM-9-_____ (class#)

Entry Fee: \$1.25

Premiums: 1st-\$8, 2nd-\$6, 3rd-\$4

Open class

Golden class

100	200	Basket
101	201	Batik fabric dyeing, 12"x12" to 36"x36", raw fabric only
102	202	Centerpiece not crocheted or knitted, dimensional not flat
103	203	Coasters set of 2-4 not crocheted or knitted
104	204	Door charm
105	205	Felt craft not toy, doll, or teddy bear
106	206	Jewelry not crocheted
107	207	Plastic canvas
108	208	Scrapbook page decorated using textiles
109	209	Silk scarf
110	210	Sweatshirt decorated using textiles
111	211	T-Shirt decorated using textiles
112	212	Wreath constructed using textiles
113	213	Wreath decorated using textiles
114	214	Any other craft using textiles not listed

HOLIDAY CRAFTS

HM-9-_____ (class#)

Entry Fee: \$1.25

Premiums: 1st-\$8, 2nd-\$6, 3rd-\$4

Open class

Golden class

118	218	Advent Calendar made using textiles
119	219	Angel
120	220	Basket

121	221	Centerpiece using textiles, dimensional not flat
122	222	Coasters set of 2-4
123	223	Nativity scene
124	224	Picture, framed or mounted unframed, NO cross stitch
125	225	Rug
126	226	Scrapbook page decorated using textiles
127	227	Stocking
128	228	Placemats set of 2-4
129	229	Tablecloth
130	230	Table runner
131	231	Tree ornament
132	232	Tree topper
133	233	Wall hanging, framed or unframed, NO cross stitch
134	234	Wreath, holiday using textiles
135	235	Wreath, holiday decorated using textiles
136	236	Any other holiday craft using textiles not listed

DIVISION 10: SPECIAL EXHIBITOR

Entry Fee: NONE

DECORATED OBJECTS AND REMODELED GARMENTS

(Base garment may be purchased, but decoration and changes must be exhibitor's work.)

HM-10-_____ (class#)

Premiums: 1st-\$3, 2nd-\$2, 3rd-\$1

501	Remodeled garment (provide before and after photos)
502	Sweatshirt, decorated
503	T-Shirt, decorated
504	Any other remodeled or decorated object not listed

NEEDLEWORK

HM-10-_____ (class#)

Premiums: 1st-\$3, 2nd-\$2, 3rd-\$1

508	Counted Cross stitch, framed	511	Knitted article
509	Counted Cross stitch, unframed but finished	512	Machine Embroidered article
510	Crocheted article		

HM-10-_____ (class#)

Premiums: 1st-\$5, 2nd-\$4, 3rd-\$3

515	Hand Embroidered article	517	Tatting article
516	Hardanger article	518	Any other needlework article not listed

VARIETY CRAFT

HM-10-_____ (class#)

Premiums: 1st-\$3, 2nd-\$2, 3rd-\$1

521	Basket	528	Plastic Canvas art
522	Blanket, not sewn	529	Puppet
523	Doll, made with textiles	530	Scrapbook page decorated using textiles
524	Doll clothes, sewn	531	Toy, stuffed
525	Jewelry constructed using textiles	532	Wall hanging
526	Latch Hook article	533	Wreath using textiles
527	Macrame article	534	Any other craft using textiles not listed

SEWN GARMENTS AND ACCESSORIES

HM-10-_____ (class#)

Premiums: 1st-\$5, 2nd-\$4, 3rd-\$3

537	Bag or Purse	544	Shawl or Poncho
538	Blouse or Shirt	545	Shorts
539	Cap or Hat	546	Skirt
540	Coat or Jacket	547	Sleepwear
541	Costume	548	Vest
542	Dress	549	Any other Sewn Garment not listed
543	Ensemble		

SEWN HOUSEHOLD FURNISHINGS

HM-10-_____ (class#)

Premiums: 1st-\$5, 2nd-\$4, 3rd-\$3

555	Placemats, set of 2-4	558	Blanket
556	Pillow	559	Comforter
557	Pillowcases, set of 2	560	Quilt

DIVISION 11: YOUTH (12 & under) and JUNIOR (13-18)

Entry Fee: NONE

DECORATED OBJECTS AND REMODELED GARMENTS

(Base garment may be purchased, but decoration and changes must be exhibitor's work.)

HM-11-_____ (class#)

Premiums: 1st-\$3, 2nd-\$2, 3rd-\$1

Youth class	Junior class		Youth class	Junior class	
300	400	Remodeled garment (provide before and after photos)	302	402	T-Shirt, decorated
			303	403	Any other remodeled or
301	401	Sweatshirt, decorated			decorated object not listed

NEEDLEWORK

HM-11-_____ (class#)

Premiums: 1st-\$3, 2nd-\$2, 3rd-\$1

Youth class	Junior class		Youth class	Junior class	
306	406	Counted Cross stitch, framed	308	408	Crocheted article
307	407	Counted Cross stitch, unframed but finished	309	409	Knitted article
			310	410	Machine Embroidered article

HM-11-_____ (class#)

Premiums: 1st-\$5, 2nd-\$4, 3rd-\$3

Youth class	Junior class		Youth class	Junior class	
313	413	Hand Embroidered article	316	416	Any other needlework article not listed
314	414	Hardanger article			
315	415	Tatting article			

VARIETY CRAFT

HM-11-_____ (class#)

Premiums: 1st-\$3, 2nd-\$2, 3rd-\$1

Youth class	Junior class		Youth class	Junior class	
318	418	Basket	326	426	Puppet
319	419	Blanket, not sewn	327	427	Scrapbook page decorated using textiles
320	420	Doll, made with textiles			
321	421	Doll clothes, sewn	328	428	Toy, stuffed
322	422	Jewelry constructed using textiles	329	429	Wall hanging
			330	430	Wreath using textiles
323	423	Latch Hook article	331	431	Any other craft using textiles not listed
324	424	Macrame article			
325	425	Plastic Canvas art			

SEWN GARMENTS AND ACCESSORIES

HM-11-_____ (class#)

Premiums: 1st-\$5, 2nd-\$4, 3rd-\$3

Youth class	Junior class		Youth class	Junior class	
333	433	Bag or Purse	340	440	Shawl or Poncho
334	434	Blouse or Shirt	341	441	Shorts
335	435	Cap or Hat	342	442	Skirt
336	436	Coat or Jacket	343	443	Sleepwear
337	437	Costume	344	444	Vest
338	438	Dress	345	445	Any other Sewn Garment not listed
339	439	Ensemble			

SEWN HOUSEHOLD FURNISHINGS

HM-11-_____ (class#)

Premiums: 1st-\$5, 2nd-\$4, 3rd-\$3

Youth class	Junior class		Youth class	Junior class	
349	449	Placemats, set of 2-4	352	452	Blanket
350	450	Pillow	353	453	Comforter
351	451	Pillowcases, set of 2	354	454	Quilt

Home Arts Contests

May Carol Doll Club Dress a Doll Contest
“Fastest Needle in the West” Contest, Crochet
“Fastest Hook in the West” Contest, Knit
Fat Quarter Challenge “Caffeinate Me” Contest
Dress a Dog Contest

Regulations:

1. Follow sign-up deadlines for contests.
2. Please fill out contest form completely.
3. Comply with the specific rules listed for each contest.
4. Contests will be held in the **Exhibition Hall**.
5. Contests will be judged by qualified members of the community.
6. Exhibitors who turn in their entry forms prior to the opening of the Fair on the Entry Days (July 22nd and July 23rd) will be given a gate admission ticket to attend the contest on the contest day.

ENTRY FORMS ON THE FOLLOWING PAGES.

MAY CAROL DOLL CLUB DRESS A DOLL CONTEST

“CAMPING IN MONTANA”

Contest Date: Monday, August 1, 2022

Entries accepted: *Saturday, July 22nd* (10am to 4pm) & *Sunday, July 23rd* (Noon to 4pm) during regular entry drop off hours.

Friday, July 28th through Sunday, July 30th from noon to 10pm.

Monday, August 1st from Noon to 6pm. **No entries taken after 6pm.**

Contest Judging: Monday, July 31, 2023, 7:00 pm. Winners will be announced directly after judging is completed.

Theme: “Camping in Montana

Rules:

- 1) Limited to one (1) entry per person.
- 2) Clothing must be made from textiles and made by exhibitor.
- 3) Clothing can be sewn or glued.
- 4) Please limit the number of props to no more than four (4).
- 5) Contest is open to Age 16 through adult.

Location: Exhibition Hall

Sponsored by: *May Carol Doll Club (Gift Certificates)* and *Montana State Fair (Rosettes)*

Prizes: 1st: Gift Certificate for \$20.00 and MSF Rosette

2nd: Gift Certificate for \$15.00 and MSF Rosette

3rd: Gift Certificate for \$10.00 and MSF Rosette

MAY CAROL DOLL CLUB DRESS A DOLL CONTEST

Entry Form

NAME: _____ PHONE# _____

ADDRESS _____ CITY _____

ZIP CODE _____

TITLE _____

WHAT INSPIRED YOU:

“FASTEST NEEDLE IN THE WEST”
Sponsored by Yarn and Honey

Contest Date: Saturday, July 30th, 2022

Contest Time: 2pm-4pm

Contest Location: Exhibition Hall; Home Arts Area

Pre-Entry Forms Accepted: Saturday, July 23rd & Sunday, July 24th (10am-4pm) in the Exhibition Hall Home Arts Dept.

The winner will be “crowned” the “Fastest Needle in the West”. There will be a Runner-Up and Second Runner-Up. All others will be given participation ribbons.

Rules:

1. No entry fee required.
2. Pre-enter to receive a gate admission ticket to join us on Saturday, July 30th.
3. Open to all ages.
4. Pattern will be given the day of the contest at 2pm. (No sneak peaks will be given.)
5. **YOU NEED BRING YOUR OWN NEEDLES AND YARN.**
6. The time will start at exactly 2pm. When the time starts, it will not be stopped until the first three contestants have completed the pattern. Anyone coming in late will have to join the contest in progress.
7. Time will be called when there are three completed patterns. These three will then be judged. Points will be taken off for any mistakes.
8. One winner will be determined after the contest. Winner is determined when the first three contestants have completed the pattern provided and are judged.
9. Winner and runners-up will be announced and awarded after judging.
10. By signing you are acknowledging you have read and understood the rules & regulations.

Prizes sponsored by Yarn and Honey



“FASTEST NEEDLE IN THE WEST”
Sponsored by Yarn and Honey
Entry Form

NAME: _____ Age _____

PHONE#: (____) _____

ADDRESS _____ CITY _____

ZIP CODE _____

Signature (if under 18 parent/guardian signs): _____

“FASTEST HOOK IN THE WEST”
Sponsored by Yarn and Honey

Contest Date: Sunday, July 31st, 2022

Contest Time: 2pm-4pm

Contest Location: Exhibition Hall; Home Arts Dept.

Pre-Entry Forms Accepted: Saturday, July 24th & Sunday, July 25th (10am-4pm) in the Exhibition Hall Home Arts Dept.

The winner will be “crowned” the “Fastest Hook in the West”. There will be a Runner-Up and Second Runner-Up. All others will be given participation ribbons.

Rules:

1. No entry fee required.
2. Pre-enter to receive a gate admission ticket to join us on Sunday, July 31st.
3. Open to all ages.
4. Pattern will be given the day of the contest at 2pm. (No sneak peaks will be given.)
5. **YOU NEED TO BRING YOUR OWN HOOK AND YARN.**
6. The time will start at exactly 2pm. When the time starts, it will not be stopped until the first three contestants have completed the pattern. Anyone coming in late will have to join the contest in progress.
7. Time will be called when there are three completed patterns. These three will then be judged. Points will be taken off for any mistakes.
8. One winner will be determined after the contest. Winner is determined when the first three contestants have completed the pattern provided and are judged.
9. Winner and runners-up will be announced and awarded after judging.
10. By signing you are acknowledging you have read and understood the rules & regulations.

Prizes sponsored by Yarn and Honey



“FASTEST HOOK IN THE WEST”
Sponsored by Yarn and Honey
Entry Form

NAME: _____ Age _____

PHONE#: (____) _____

ADDRESS _____ CITY _____

ZIP CODE _____

Signature (if under 18 parent/guardian signs): _____

FAT QUARTER CHALLENGE
Sponsored by The Quilt-A-Way
“Caffeinate Me” Contest

Contest Date: Tuesday, August 2nd, 2022

Pre-entries and Pre-entry Forms Accepted: Saturday, July 23rd & Sunday, July 24th (10am-4pm) and Tuesday, August 2nd (noon-6pm) in the Exhibition Hall Home Arts Dept.

Judging: Tuesday, August 2nd at 7pm

I love coffee! Patty Sue, owner of The Quilt-A-Way found some great coffee fabric for me to choose from for this contest she has so generously sponsored. She has also made sure to have accompanying fabric if you choose to shop for other fabrics and notions at her store.

Rules & Regulations:

1. Limit one entry per person. Only enter in one of the three classes.
2. Article must be completely entrant’s work consisting predominantly of textiles.
3. Pre-entry on Saturday, July 23rd or Sunday, July 24th to receive a gate admission ticket to join us on Tuesday, August 2nd for judging. There will be drawings for prizes during judging.
4. Fat quarter must be prominently featured, but other textiles can be used.
5. Must be a finished project. Must be clean and exhibit ready.
6. Contest open for ages 12 and up.
7. Three classes to enter **Ages 12 to 18** (boys & girls), **Women over 18**, & **Men over 18**.
8. Entries will be released on regular Release Day Sunday, August 7th, 10am-2pm.
9. By signing you are acknowledging you have read and understood the rules & regulations.

Prizes sponsored by The Quilt-A-Way



FAT QUARTER CHALLENGE: “CAFFEINATE ME” CONTEST
Sponsored by The Quilt-A-Way
Entry Form

NAME: _____ Age _____

PHONE#: (____) _____

ADDRESS _____ CITY _____

ZIP CODE _____

Signature (if under 18 parent/guardian signs): _____

Describe your project:

DRESS A DOG CONTEST
Sponsored by MargiGrace Hansen

Contest Date: Thursday, August 4th, 2022

Pre-Entries and Pre-Entry Forms Accepted: Saturday, July 23rd & Sunday, July 24th (10am-4pm) in the Exhibition Hall Home Arts Dept.

Entries also accepted: Thursday, August 4th (noon-6pm)

Judging: Thursday, August 4th at 7pm

I love dogs! I am personally sponsoring this contest to encourage entrants to make a dog outfit. I would also love to see more pet items entered in General Entries as well.

Rules & Regulation:

1. No entry fee required.
2. One entry per contestant.
3. Pre-enter on Saturday, July 23rd or Sunday, July 24th to receive a gate admission ticket to join us on Thursday, August 4th for judging. There will be drawings for prizes during judging.
4. Outfit must be completely entrants work consisting predominantly of textiles.
5. Must provide at least three photos of the dog in the outfit. One from each angle above, side, and front.
6. Dog must be able to move freely in outfit. Judges will consider suitability to the dog.
7. Safety of outfit will also be considered during judging.
8. Outfit must be finished, clean, and exhibit ready. Tip: Use a lint roller to remove hair if needed.
9. NOTE: Dogs are NOT permitted on the fairgrounds during the fair.
10. Contest open for ages 12 and up.
11. Winners will be announced and awarded after judging.
12. Entries will be released on regular Release Day Sunday, August 7th, 10am-2pm.
13. By signing you are acknowledging you have read and understood the rules & regulations.

Prizes sponsored by Home Arts Superintendent MargiGrace Hansen



DRESS A DOG CONTEST
Sponsored by MargiGrace Hansen

Entry Form

NAME: _____ Age _____

PHONE#: (____) _____

ADDRESS _____ CITY _____

ZIP CODE _____

Signature (if under 18 parent/guardian signs): _____

