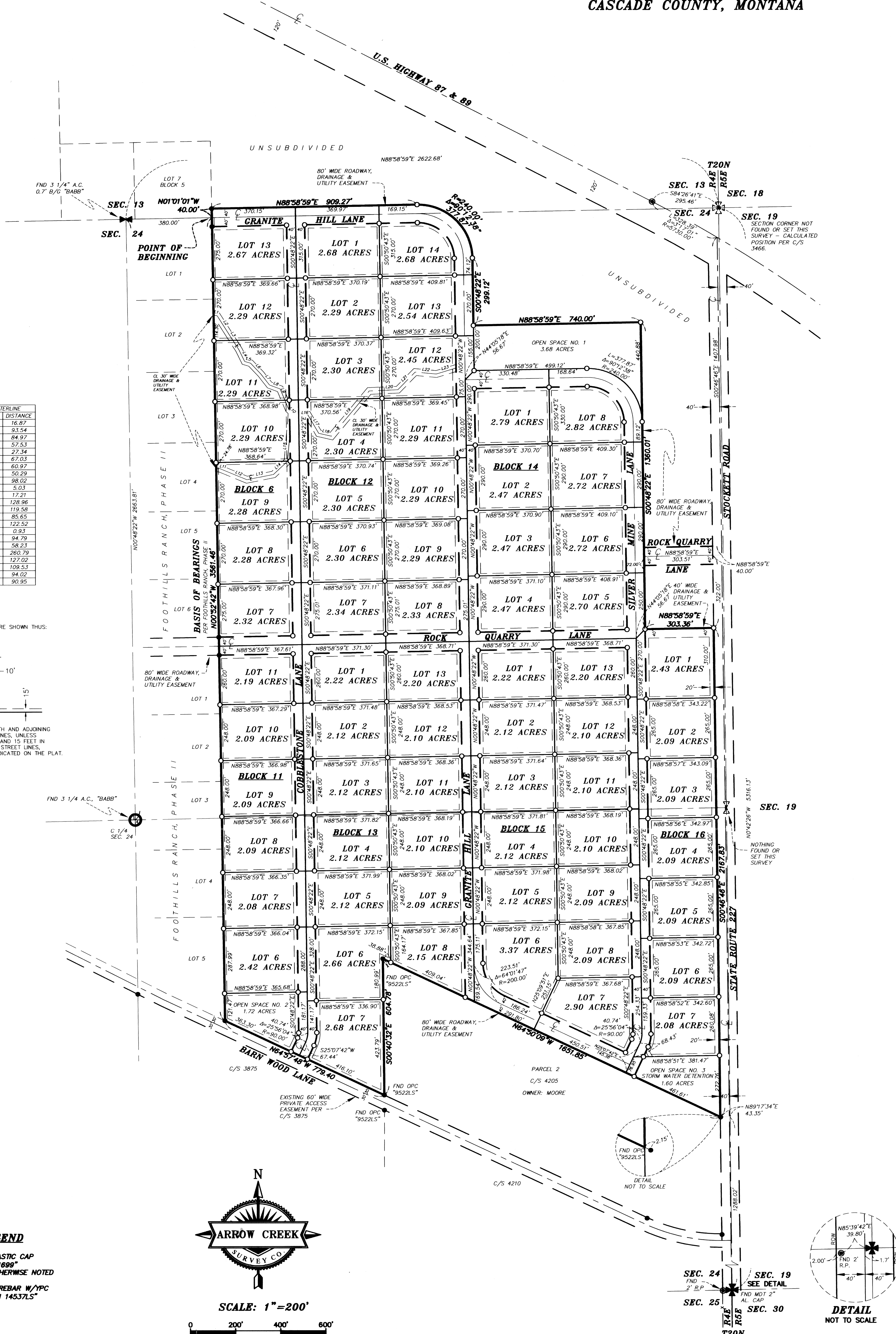


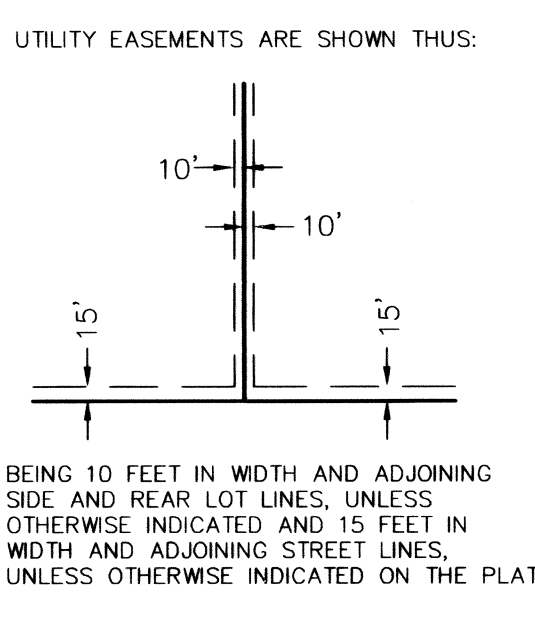
699 #70  
2/01

# A SUBDIVISION PLAT OF FOOTHILLS RANCH, PHASE III

A SUBDIVISION IN THE E 1/2 OF SECTION 24 &  
S 1/2 OF SECTION 13, T20N, R4E, P.M.M.,  
CASCADE COUNTY, MONTANA



LINE	BEARING	DISTANCE
L1	S76°05'06"E	16.87
L2	S32°24'02"E	93.54
L3	S32°36'34"E	94.97
L4	S78°05'19"E	57.53
L5	S72°58'17"E	27.34
L6	S43°31'06"E	67.03
L7	S37°52'05"E	60.97
L8	S69°23'55"E	50.29
L9	S22°24'58"E	98.02
L10	S46°50'36"E	5.03
L11	S82°23'21"E	17.21
L12	S67°28'12"E	128.96
L13	N78°47'30"E	119.58
L14	N46°59'33"E	85.65
L15	N04°51'58"E	122.52
L16	N90°00'00"E	0.93
L17	S30°17'43"E	94.79
L18	S77°16'50"E	58.23
L19	N39°54'21"E	260.79
L20	N87°34'09"E	127.02
L21	N44°31'19"E	109.53
L22	S84°31'29"E	94.02
L23	N73°05'12"E	90.95

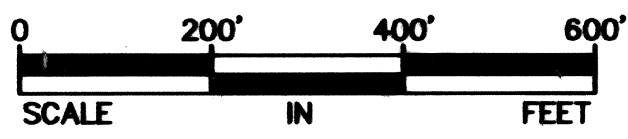


**LEGEND**

- = FOUND PLASTIC CAP "BABB LS11699" UNLESS OTHERWISE NOTED
- = SET 5/8" REBAR W/YPC "MILBURN 14537LS"



SCALE: 1"=200'



OWNER: RANCH DEVELOPMENT, LLC  
TOTAL PLAT AREA: 164.69 ACRES  
DATE SURVEYED: NOVEMBER, 2006 - OCTOBER, 2007

ARROW CREEK SURVEY CO. PH. 406-735-4100	JOB NO. 0666-NCI	SHEET NO. 1 OF 2
	DR. BY JIM DATE FEB. 5, 2007 REVISED OCT. 24, 2007	F.B. No. 47
1/4 SECTION	TOWNSHIP 20N	RANGE 4E

P-2007-000060 PL  
Total Pages: 4 R 40.00 By: isappett 12/12/2007 04:04:54 PM  
Cascadia County, Montana  
C:\Users\jim\Documents\2007\2007-000060\2007-000060.plt

22425

22425