

## **ADDENDUM NO. 2**

to the PROJECT MANUAL & DRAWINGS

**November 2, 2018**

### **Paddock Club Remodel**

#### ITEM NO. 1. PLAN HOLDERS LIST

- a. As of the date of this addendum, the following are the general contractors with bid intention:
  - 1) James Talcott Construction
  - 2) Detailed Construction
  - 3) Dick Olson Construction
  - 4) Sletten Construction

#### ITEM NO. 2. CLARIFICATIONS

- a. There are 3 FEC shown on M1.0
- b. Provide a mirror for each sink.
- c. Provide Grab bars for each ADA toilet stall
- d. Provide an ADA /braille sign for each bathroom.

#### ITEM NO. 3. SUBSTITUTIONS

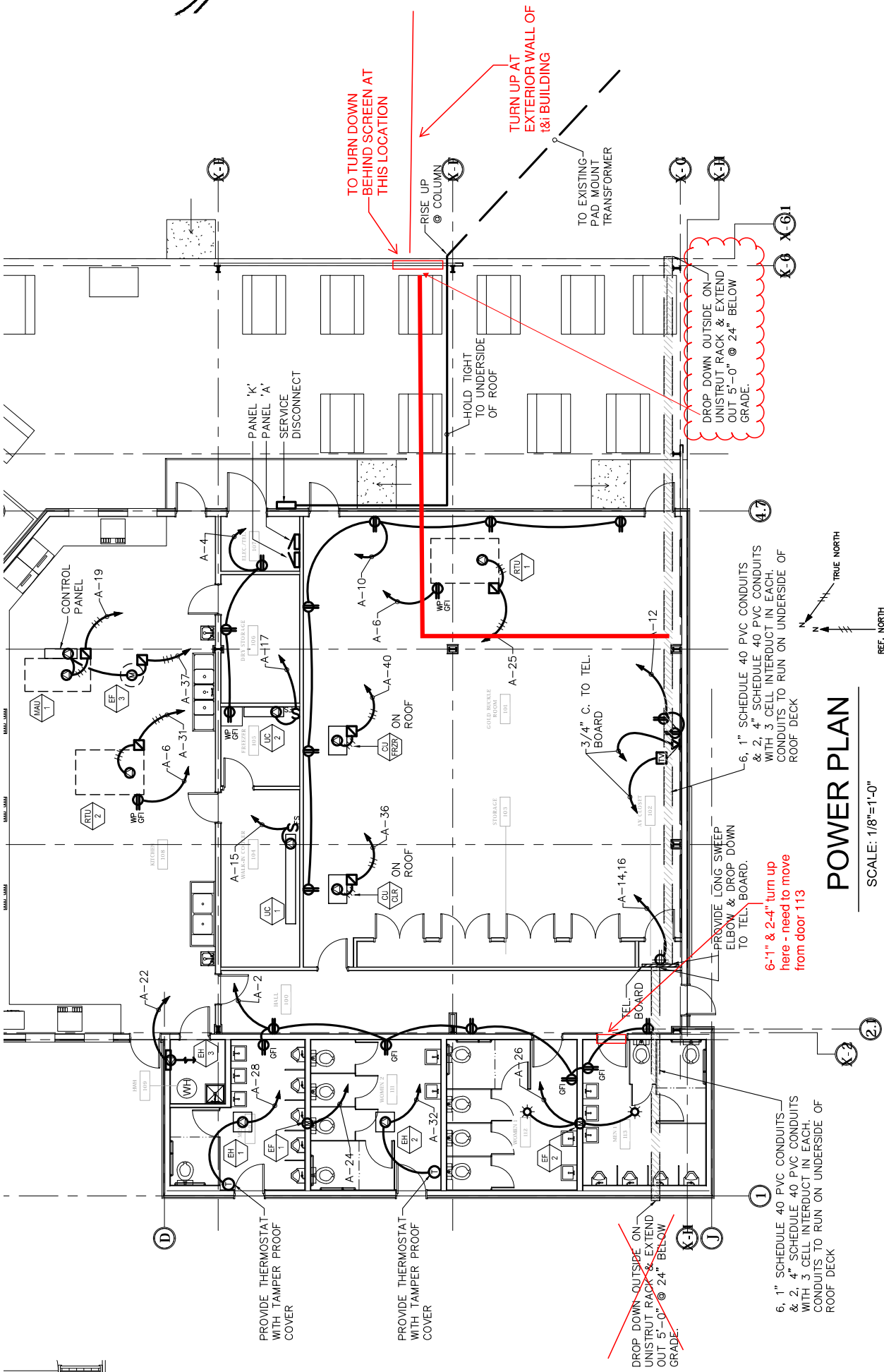
- e. Daikin as approved equal.

### **A. ELECTRICAL**

#### ITEM NO. 4. SHEET E2.0 – POWER PLAN

- a. 6-1" AND 2-4" conduits are turned up at Gridline X-2, and are right in door #113. They will need to be rerouted north or south of door #113 and ran up to above ceiling in Hall 100 and dead end into AV closet at ceiling. They will continue from east wall of AV closet and will exit to North of Gridline X-F and turn down as shown and continue and run to T&I building and turn up at outside wall at T&I.
- b. The existing light pole through the roof of the Paddock Club will be fed from the new power at the Paddock Club. The pole will have 12 new LED lights of 880 Watts each. The lighting will be controlled from a breaker in the panel.

**END OF ADDENDUM**



# POWER PLAN

SCALE: 1/8"=1'-0"

### GENERAL NOTES:

- 1.) RUN SERVICE OVERHEAD TO BETTING BOOTH CONTAINERS.
- 2.) CONTRACTOR TO COORDINATE LOCATION & ELECTRICAL CONNECTIONS FOR WALK-IN COOLER & FREEZER UNIT COOLERS & CONDENSERS WITH COOLER SUPPLIER.
- 3.) ALL 15 AMPS & 20 AMP DUPLEX RECEPTACLES IN KITCHEN SHALL BE GFI